



iCell® Astrocytes

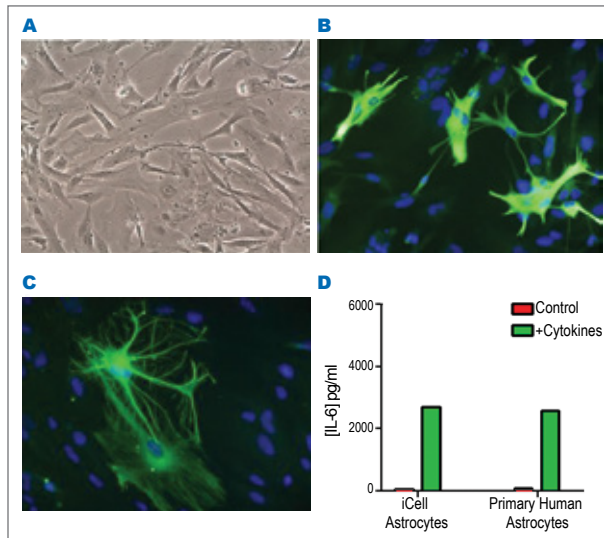
iCell® Astrocytes from FUJIFILM Cellular Dynamics, Inc. (FCDI), are a heterogeneous population of human astrocytes derived from induced pluripotent stem cells. These cells provide a biologically relevant human model for drug discovery and disease research.

Astrocytes, the most abundant cell type in the central nervous system, create and maintain the brain architecture and perform various essential functions including brain homeostasis, distribution of energy substances, and synaptogenesis. In addition, recent research has shown that the loss of or changes in normal astrocyte functions play a critical role in neurological disorders and neurodegenerative diseases, such as Alzheimer's and Parkinson's diseases.

A more biologically relevant alternative to current cell models, iCell Astrocytes offer a reliable source of high quality, high purity human astrocytes for in vitro astrocyte-mediated neurotoxicity, targeted drug discovery, blood brain barrier modeling, and other life science research. These cells express the characteristic proteins, S100 calcium binding protein B (S100 β) and glial fibrillary acidic protein (GFAP), and secrete trophic factors with stimulation.

Advantages

- **Human cells:** iCell Astrocytes are differentiated from human iPS cells and exhibit functional characteristics similar to native human astrocytes.
- **Homogenous and reproducible:** iCell Astrocytes are highly pure, providing biologically relevant and reproducible results.
- **Acute and long-term testing:** iCell Astrocytes proliferate and remain viable and pure in culture for weeks, enabling assessment of both acute and sub-chronic responses.
- **Ideal for co-culture systems:** iCell Astrocytes are generated from the same iPS cell line as iCell Neurons, thus providing genetic consistency for co-culture studies.
- **Easy to implement:** iCell Astrocytes are shipped cryopreserved. Simply thaw and use.



▲ Figure 1: iCell Astrocytes Exhibit Characteristics of Native Human Astrocytes
A highly pure astrocyte population, iCell Astrocytes show (A) typical morphology and (B) expression of GFAP. Upon stimulation with TNF α , IL-1 β , and IFN γ , iCell Astrocytes demonstrate (C) changes in cell morphology (stained with GFAP, green) and (D) upregulation of the IL-6 secretion, a pro-inflammatory cytokine.

Applications

iCell Astrocytes are amenable to a variety of biochemical and cellular assays including:

- Astrocyte-mediated neurotoxicity
- Trophic factor secretion
- Co-culture environments

Specifications

Cell Type	Astrocytes
Organism	Human
Source	Differentiated from an FCDI reprogrammed human iPS cell line
Quantity	≥1.0 x 10 ⁶ viable cells per vial
Shipped	Frozen

Ordering Information

Kit	Component(s)*	Catalog Number
iCell Astrocytes Kit, 01434	≥1.0 x 10 ⁶ viable cells	R1092

* A User's Guide is provided in each kit.

For More Information

FUJIFILM Cellular Dynamics, Inc.

525 Science Drive
Madison, WI 53711 USA

(608) 310-5100 | Toll-free US (877) 310-6688

fcdi-sales@fujifilm.com

www.fujifilmcdi.com

iCell Products

Provide access to biologically relevant, human iPS cells for disease modeling, drug discovery, toxicity testing, and regenerative medicine. FCDI's rapidly growing portfolio of iCell products includes human cardiomyocytes, GABAergic, glutamatergic, dopaminergic and motor neurons, hepatocytes, endothelial cells, astrocytes, hematopoietic progenitor cells, skeletal myoblasts, macrophages, and others.

Visit the FCDI website for the most current list of supported cell types.

